



WHAT IS *ePatentManager*?

A comprehensive software package allowing the user to;

- Find, review, evaluate, and store all Prior Art from any public or private database;
- Continuously update the data;
- Retrieve and rapidly share the data on an enterprise platform;
- Categorize prior art by importance level and citation trees;
- Determine relative IP values
- Help develop licensing revenue agreements using more reliable and accepted methods;
- Develop potential markets objectively and efficiently;
- Perform strategic visual mapping to convey and compare relative IP values within a Technology Sector or Evaluate via IP Clustering and Bracketing in the Market.

WHY *ePatentManager*?

- Any organization developing new products, contemplating future acquisitions, or pursuing new markets requires quick and efficient analysis of specific IP
- Each IP asset has some inherent value which can be "objectively" determined by one of several valuation methodologies
- Mapping software to assess different technology sectors instantly allows for strategic decision making, saving a considerable amount of time
- *ePatentManager* software provides complete comparative valuation mapping while allowing for an instantaneous snapshot valuation of a specific IP technology sector.

ePatentManager:

Currently Integrates and optionally manages key components from each of these three sites:

www.lga-inc.com



www.antarcti.ca



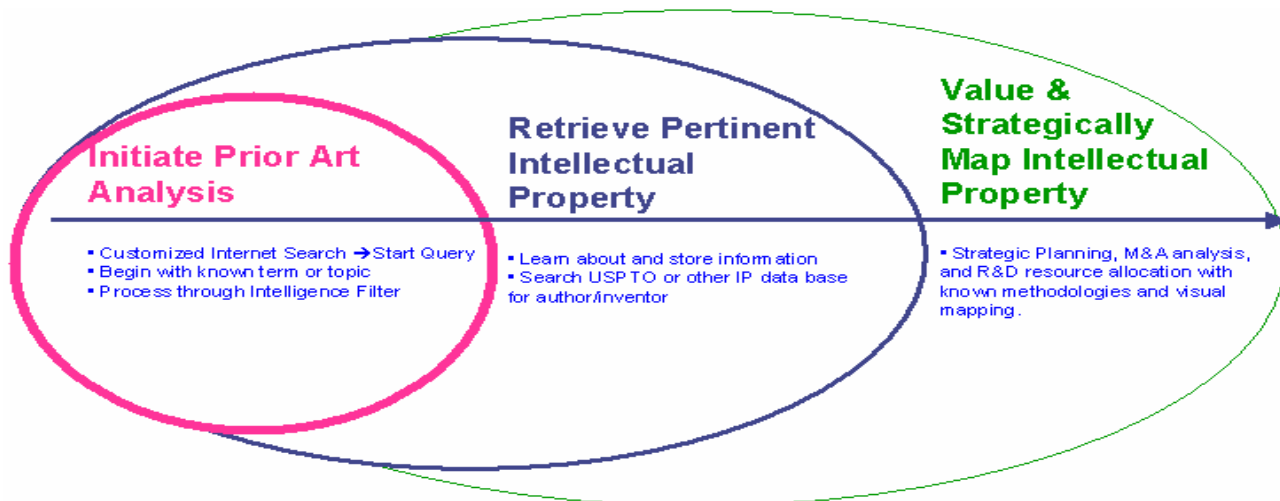
www.pl-x.com



ePatentManager.com

- 784 Villier Ct., Virginia Beach, VA 23452-3848
- Tele: (757)486-2088
- Fax: (757)486-4312

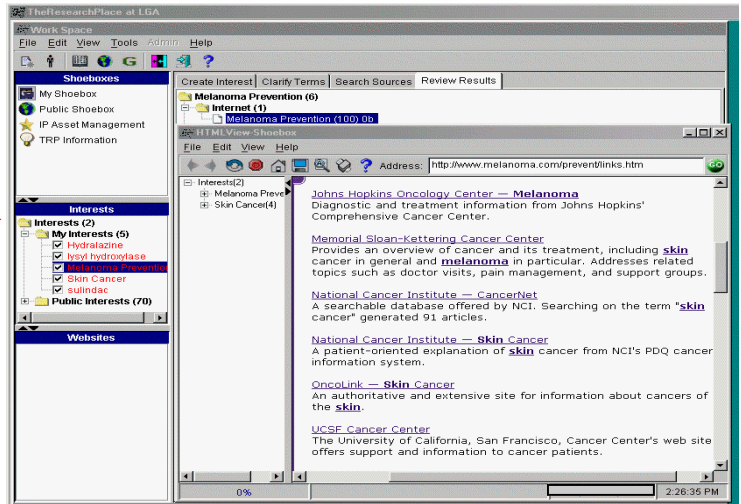
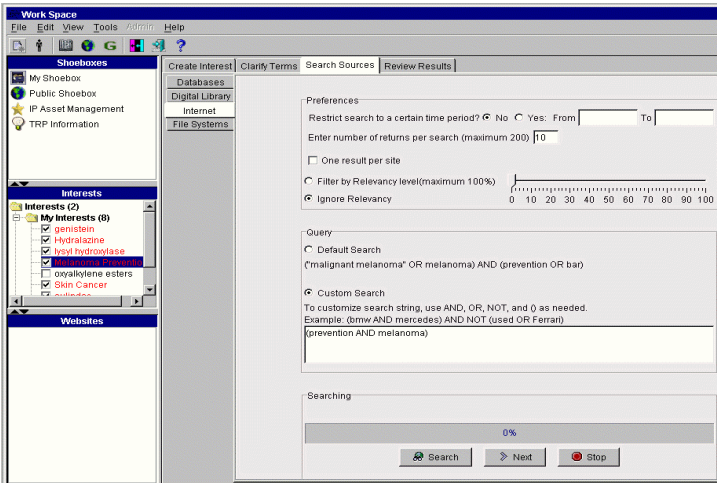
How *ePatentManager* Works: A 3 Step Progression



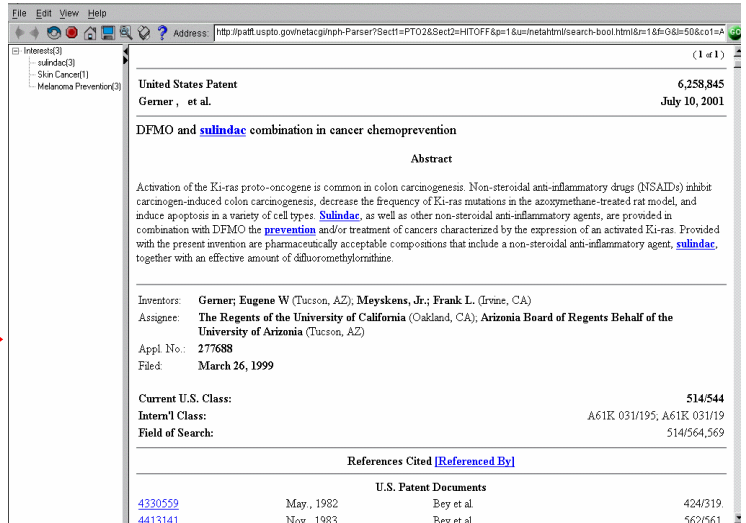
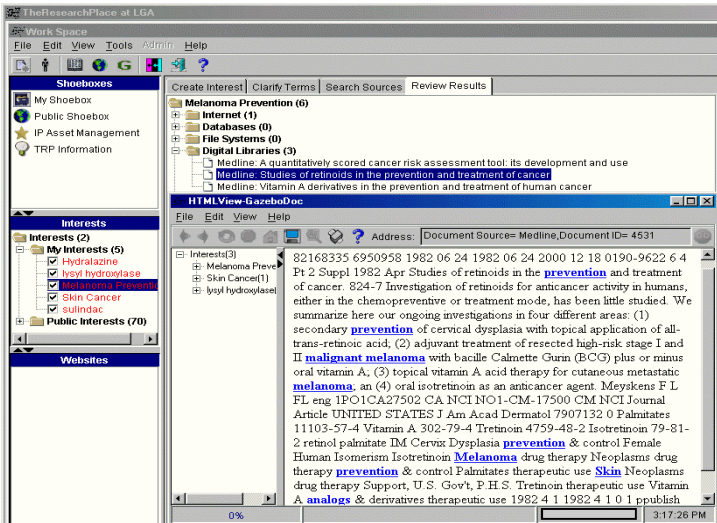
Seamless Intellectual Property Management →

3 Step Progression—Working Example

Step 1—Initiate Prior Art Analysis: Search TRP for “Melanoma Prevention”



Step 2—Retrieve Pertinent Intellectual Property: TRP & www.uspto.gov



Step 3—Value & Strategically Map Intellectual Property: pl-x & Antarcti.ca

TRRU® Valuation:

Inputs

US\$ 0.5 million

12 months

07/10/2021

0.00252

0.000119

US\$ 23.6 million

Results

Estimated cost to bring to market

Estimated time to bring to market

Expiration date of the Central Patent

Daily variability measure of the market value of *Cosmeceutical Technology*

Risk-free rate

Computed market-driven value of *Cosmeceutical Technology* 12 months before launch.

TRRU® Valuation: US\$ 22.5 million

Next Step

Pricing

pl-x

Advanced search results for 'Cancer'.

Categories: Start / plx / Life Sciences / Technology /

Subcategories: Antimicrobial Technology, Artificial Heart Technology, Artificial Skin, Autoimmune, Biomedical Lab Reagents Technology, Blood Processing Diagnostic Instrumentation, Blood Substitutes Technology, CNS-Specific Therapeutics, Cancer Therapeutics, Cardiac Therapy Electronic Devices, Cardiovascular Therapeutics, Catheter, Combinatorial Chemistry, Computed Tomography (CT)...

powered by... visual net

Map showing 46 patents related to Cancer Therapeutics, including categories like Antimicrobial Technology, Artificial Heart Technology, Artificial Skin, Autoimmune, Biomedical Lab Reagents Technology, Blood Processing Diagnostic Instrumentation, Blood Substitutes Technology, CNS-Specific Therapeutics, Cancer Therapeutics, Cardiac Therapy Electronic Devices, Cardiovascular Therapeutics, Catheter, Combinatorial Chemistry, Computed Tomography (CT) and MRI Scanner Technology, Dental Supplies, Infectious Disease..., Minimally Invasive Cardiac..., Non-Viral Gene Therapy, Organ Transplant or Non-Gene Chip Genomics, Oxygen Delivery, Female Health Devices, Contrast Agents..., Gene Chip Genomics, Heterocyclic Catalysts, Extracts of Orange Peel, Tumor Therapeutic Targets, Female Health Devices, Contrast Agents..., Gene Chip Genomics, Pain Therapy, Metabolic Disease Therapeutics, Protein Screening, Vaccine Technologies, RNA-Blocking (Antisense)..., Vision Correction Devices.